



Emily Ann Dau

August 4, 1970 - December 28, 2013

Age 43, of Custer Park, IL passed away suddenly, Saturday, December 28, 2013 at her home. Born August 4, 1970 in Shakopee, MN.

Graduate of Delano High School in Delano, MN Class of 1988, University of Minnesota, receiving a bachelor's degree in occupational therapy and Kankakee Community College receiving her nursing degree. She genuinely cared and touched many lives throughout her years of working at many local long term care facilities. She most recently was employed as an occupational therapist at Salem Village Nursing Home in Joliet, IL. She was a member of the Daughters of the American Revolution (D.A.R.), serving as Good Citizen Chairman.

Emily will be remembered for her beautiful smile, kindness and the joy she gave to others. She will be greatly missed by many.

Surviving are her husband, William Anthony Dau of Custer Park, whom she married August 16, 2003 at the College Church of the Nazarene in Bourbonnias, IL; son, Andrew William Dau, at home; her parents, Gene Harold and Dolores Marie (nee Komives) Ullstrom of Rockford, MN; one brother, Joe (Sheila) Ullstrom of Rockford, MN; one sister, Susanne (Joe Tabery) Ullstrom of Excelsior, MN; sisters-in-law, Cindy (Terry) Clayton of TX and Mary (friend, Richard Goodrich) Benjamin of St. Anne, IL; brother-in-law,

Timothy Smith of Custer Park; numerous nieces, nephews, aunts, uncles, cousins, and friends. Preceding her in death were her mother-in-law, Judith Smith; and brothers-in-law, Troy Dau and Edwin Smith.

Funeral services will be at the R.W. Patterson Funeral Homes, Ltd. & Crematory, Braidwood Chapel, Thursday, January 2, 2014 at 7:00 p.m. with visitation three hours preceding services. Cremation rites will be accorded following services. In lieu of flowers, memorial donations to the family would be appreciated.

Previous Events

Visitation

JAN 2. 4:00 PM - 7:00 PM (CT)

R.W. Patterson Funeral Home
401 East Main St.
Braidwood, IL 60408
(815) 458-2336
info@rwpattersonfuneralhome.com
<https://www.rwpattersonfuneralhomes.com>

Service

JAN 2. 7:00 PM - 7:30 PM (CT)

R.W. Patterson Funeral Home
401 East Main St.
Braidwood, IL 60408
(815) 458-2336
info@rwpattersonfuneralhome.com
<https://www.rwpattersonfuneralhomes.com>

Tribute Wall



“ 1 file added to the album *Emily Ann Dau Video Tribute*



Sara Foote - January 21, 2014 at 10:19 AM

PS

“ *Bill, we were so sorry to hear of your wife's death. We were out of town or we would most certainly have paid our respects to you personally. Your wife was beautiful. You are in our thoughts and prayers. Pam & Joe Silvey*

Pam & Joe Silvey - January 07, 2014 at 10:10 AM

MI

“ *Michelle lit a candle in memory of Emily Ann Dau*



michelle - January 06, 2014 at 08:50 PM

KK

“*Karlyn, Benny, Srikant, and I are all together in Belgium, thinking of Emily and her family . We wish we could be closer, or on a closer time zone, to be able to join the ceremony today. As you gather today in Illinois, we will be thinking of Emily's smile and spirit and the many people she touched in her life..*

I love to look at the pictures that have been posted -- bringing back many fond memories of the times we spent with Emily. On New Years Eve, we looked at our wedding album and remembered the trip Emily and many other cousins and family members made to Belgium for our wedding. That was an incredible gift for us and a great memory.

Our hearts go out to Bill, Andrew, Gene, Dolores, Suzanne, and Joe. We are very sorry for your loss.

Hugs, Kristin and Benny

Kristin Komives - January 02, 2014 at 03:21 PM

“ *Inspired by Emily*

*At a loss for words
it remains our privilege to use them.*

*We remember when we marveled at the rainbow
as the sun heated our backs
and a cloud wept a shower upon us.*

*It is difficult to comprehend
how we need both sun and shower to have the beauty;
how a rainbow that flourished at a place and for a time
remains vivid in a timeless space to which we often return;
how we can join together to share this timeless space
yet also keep it sacred and private.*

*We remember how we bicycled up Route 66.
Decades after it was lost to history
we found it as the road to our meeting point.
There we could renew our embrace--
a flesh-and-blood embrace
enhanced by the shadows of ancestors long since lost,
but found still in the shade of a small place called Braidwood,*

*Yes, it is difficult
to embrace the abundance of what we have
as we mourn the one we have lost,
to comprehend the wash of sunshine and weeping cloud,
to let timeless space replace real time and specific place,
to follow a route that is both lost and found,
to share something of ancestors who passed through,
and to envision the dreams for which we will be ancestors.*

Yet, it is easy pleasure to share a rainbow.

*At our loss of dear Emily
it remains our privilege to love her.*

Bob Komives

Bob KOMives - January 02, 2014 at 01:56 PM

KA

This is one of the most beautiful things I have ever read.

Karen - January 08, 2014 at 09:51 AM

BM

“ *I will always remember Emily's smiling face. I had a lot of fun in Girl Scouts with Emily and she could always make you laugh. My heart goes out to each of you during this difficult time. I am praying for lightened hearts in the days to come. God bless you all.*
Bridgett (Schmitz) Mosher

Bridgett Mosher - January 01, 2014 at 06:15 PM

LH

“ *Emily on right in photo. June 1985 Ullstrom family visit to Harris home in Oklahoma. We shared many good times; this was one. Emily will be missed.*

Leaman and Judy Harris



Leaman Harris - January 01, 2014 at 12:34 PM

BK

Great image to remember Emily and people who love her.

Bob Komives - January 01, 2014 at 02:40 PM

RS

“ *Ruby Statler sent a virtual gift in memory of Emily Ann Dau*



Ruby Statler - January 01, 2014 at 10:05 AM

KM

“ *Bill, Ken and I are so very sorry for your loss. It was such a pleasure working and getting to know Emily. With her kind and gentle sprit she had truly special gift that she shared with not only her patients but with her co-workers as well. She will be missed dearly. I pray you find comfort knowing she is in the loving arms of our Lord. May peace and God be with you, Andrew and your family. God Bless Ken and Donna Muehlbacher*

Ken and Donna Muehlbacher - January 01, 2014 at 06:35 AM

BK

“ *5 files added to the album Emily Remembered*



Bob and Marney Komives - January 01, 2014 at 12:51 AM

KH

“ *Love and prayers Emily. Kathy.*

Kathy Hines - December 31, 2013 at 07:40 PM

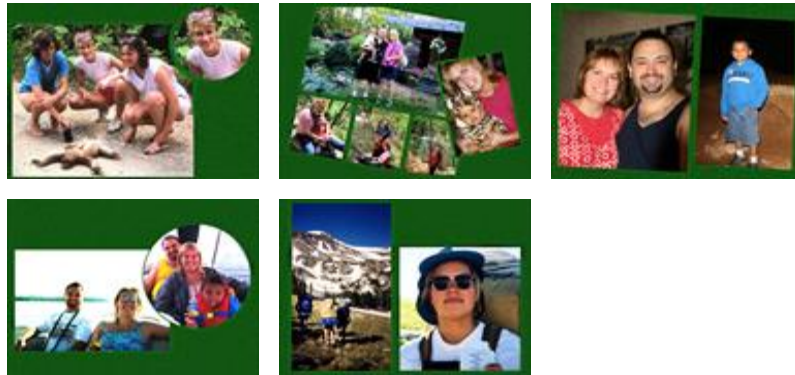


“ *I will miss you dearly sis. Love you!!*

Mary Dau-Benjamin - December 31, 2013 at 05:53 PM

BK

“ *6 files added to the album Emily Remembered*



Bob & Marney Komives - December 31, 2013 at 05:02 PM

LV

“ *To the family of Emily,
Please accept our deepest sympathies on the loss of your beautiful
sweet Emily. Words can't really relieve the pain you are feeling right
now, but please know that we are thinking of you all and our prayers
are with you at this time. God Bless.*

Lila and Larry Venjohn - December 31, 2013 at 04:30 PM

BK

“ 9 files added to the album *Emily Remembered*



Bob Komives - December 31, 2013 at 02:22 PM

BK

“ 1 file added to the album *Emily Remembered*



Bob & Marney Komives - December 31, 2013 at 01:01 PM

SU

“ *Emily and I shared a very special bond all of our years together. She loved her family with all her being. Her love will be in our hearts forever.*



Susanne Ullstrom - December 31, 2013 at 12:55 PM



“ Peaceful White Lilies Basket was purchased for the family of Emily Ann Dau.



December 31, 2013 at 12:38 PM



“ I had the opportunity to work with Emily at Provena Our lady of Victory. I remember Emily as an energetic person and the picture of her family on her desk. Even though both of us ventured away, I still remember Emily and our team. My prayers go to her and for the comfort of her family.
With deepest condolences,
Jaya Jacob



Jaya - December 31, 2013 at 12:12 PM



“ Bill, I'm so very sorry for the loss of your beautiful wife. Holding all of you in my thoughts and prayers.

Karen Zigrossi - December 31, 2013 at 12:11 PM



“ Words are completely inadequate. My heart is breaking for Bill & Andrew. I didn't know Emily well, but your love for her was easy to see.
73 - John K9BYT

John - K9BYT - December 31, 2013 at 11:37 AM

BK

“ *Bradley Kirk lit a candle in memory of Emily Ann Dau*



Bradley Kirk - December 31, 2013 at 10:56 AM

RS

“ *Robert Scott lit a candle in memory of Emily Ann Dau*



robert scott - December 31, 2013 at 09:32 AM



“ *Beautiful in Blue was purchased for the family of Emily Ann Dau.*



December 31, 2013 at 09:16 AM

MB

“ *I have so many wonderful memories of Emily, who was so kind and had a great sense of humor. I'm so glad we were able to share fun times like the Christkindlsmarkt in Excelsior, the State Fair and bowling. I will always miss her.*



Mary Van Beusekom - December 31, 2013 at 09:15 AM



“ *Beautiful in Blue was purchased for the family of Emily Ann Dau.*



December 31, 2013 at 09:12 AM



“ *I am very sorry for your loss. During a time like this it can be hard for friends and family to find the right words to say. Thankfully we can echo the comforting words that we find in the Bible. At Revelation 21:4 it tells us that the God of all comfort will soon do away with all suffering, sickness, tears, and death. Along with what we read at Daniel 12:2, the Bible gives us a firm hope for the future. Until that time, may your loving memories of Emily bring you solace during this difficult time. Your family has my sincerest condolences.*

Dan Cole - December 31, 2013 at 08:38 AM



“ *Sentiments of Serenity Spray was purchased for the family of Emily Ann Dau.*



December 31, 2013 at 07:51 AM

Glyn
Kirk

“ *Glyn Kirk lit a candle in memory of Emily Ann Dau*



Glyn Kirk - December 31, 2013 at 07:27 AM

CB

“ *Carl And Debra Brazelton lit a candle in memory of Emily Ann Dau*



Carl and Debra Brazelton - December 31, 2013 at 05:55 AM

RR

“ *Richard Rosas lit a candle in memory of Emily Ann Dau*



Richard Rosas - December 31, 2013 at 03:43 AM

BH

“ *Bill Dau (Your Loving Husband) lit a candle in memory of Emily Ann Dau*



Bill Dau (Your Loving Husband) - December 31, 2013 at 01:09 AM

JA

“ *Joni Anderson lit a candle in memory of Emily Ann Dau*



Joni Anderson - December 30, 2013 at 11:06 PM

JE

“ *Julie Eich lit a candle in memory of Emily Ann Dau*



Julie Eich - December 30, 2013 at 10:23 PM

JE

I got to work with Emily several years ago at Our Lady of Victory in Bourbonnias, Il. She was a pleasure to work with. My condolences goes out to her family. She was very proud of her son Andrew and love to share stories of him. May you rest in peace.

Julie Eich - December 30, 2013 at 10:28 PM

PK

“ *Patrick Kinkin lit a candle in memory of Emily Ann Dau*



patrick kinkin - December 30, 2013 at 09:27 PM

Tiffany Jubin

“ So sorry for the loss of your wife Bill. I never got to meet her, but she was beautiful.. Sending prayers your way, and God bless!!!



Tiffany Jubin - December 30, 2013 at 09:12 PM

CW

“ Emily was so special...even though we lived far apart..we kept in touch often. Be with the angels sweet girl. We love you. ..your Arkansas family...Aunt Jerri,Cindy, & Tiffany

Cindy Rollow Windham - December 30, 2013 at 09:06 PM



“ Roxanne Byrne lit a candle in memory of Emily Ann Dau



Roxanne Byrne - December 30, 2013 at 08:55 PM

WD

“ 1 file added to the album Emily Remembered



William Dau - December 30, 2013 at 08:31 PM

WD

“ 1 file added to the album *New Album Name*



William Dau - December 30, 2013 at 08:29 PM

LS

“ *Emily was a kind and caring therapist, as well as a treasured friend. I will miss her.*

Lynn Salley - December 30, 2013 at 08:10 PM

MR

“ *I am just heartsick at the news of Emily's passing. Went to grade school and high school with Emily and have so many wonderful and funny memories with Emily. I will carry them with me always. God bless her entire family and give them the strength they will need to carry them through this. U will always be in our thoughts and prayers. Love Mollie*

Mollie Rolf - December 30, 2013 at 08:07 PM

BK

“ *Worked with Emily at Walnut Grove Home in Morris, she loved the residents and they loved her, and she always had a smile for everyone!!!!*

BARB KLEINFELDT - December 30, 2013 at 08:05 PM

LS

“ *Lynn Salley lit a candle in memory of Emily Ann Dau*



Lynn Salley - December 30, 2013 at 08:04 PM

BK

“ *BARB KLEINFELDT lit a candle in memory of Emily Ann Dau*



BARB KLEINFELDT - December 30, 2013 at 08:01 PM

MP

“ *I had the opportunity to work with Emily at Walnut Grove Nursing Home. She has this reddish complexion that matches her happy disposition. We agree on choosing healthy foods as it shows on some of our potlucks. Thank you very much Emily! Condolence to the family members specially to her son whom she was very proud of.....Michael Pantig*

Michael Pantig - December 30, 2013 at 07:46 PM